

# KHARMA

## ENIGMA VEYRON

OWNER'S MANUAL

EV-2D-1.0

*Dutch Masterpieces*  
HANDCRAFTED IN THE NETHERLANDS

# SAFETY INSTRUCTIONS

## IMPORTANT SAFETY INSTRUCTIONS

### Warning!

TO REDUCE THE RISK OF FIRE OR ELECTRIC SHOCK,  
DO NOT EXPOSE THIS PRODUCT TO RAIN OR MOISTURE.



**CAUTION**  
RISK OF ELECTRIC SHOCK  
DO NOT OPEN



CAUTION: TO REDUCE THE RISK OF ELECTRIC SHOCK,  
DO NOT REMOVE COVER (OR BACK).  
NO USER-SERVICEABLE PARTS INSIDE.  
REFER SERVICING TO QUALIFIED SERVICE PERSONNEL.

### Important

The lightning flash with arrowhead symbol, within an equilateral triangle, is intended to alert the user to the presence of un-insulated « dangerous voltage » within the product's enclosure that may be of sufficient magnitude to constitute a risk of electric shock to persons.

### Important

The exclamation point within an equilateral triangle is intended to alert the user to the presence of important operating and maintenance (servicing) instructions in the literature accompanying the product.

*Awaken your senses*

## CONGRATULATIONS

You are now a Kharma Loudspeaker owner. Your new Enigma Veyron loudspeaker system, properly installed, will give you all the satisfaction and enjoyment you expect from Kharma. Technically at the fore-front of current loudspeaker design, the Enigma Veyron will reveal the full emotional range of music and will do so with vivid dynamics and detail. As with any high quality product, special care must be taken to install and operate your new speakers.

Please read this manual carefully and totally prior to installation.

# TABLE OF CONTENT

- 3 Congratulations
- 4 Introduction to the Enigma Veyron
- 6 Part list
- 7 Unpacking Loudspeaker
- 11 Connection
- 12 Positining your speakers
- 13 Using your Kharma speakers
- 14 Taking care of your speakers
- 15 Specifications
- 16 Warranty

# INTRODUCTION TO THE ENIGMA VEYRON

Above and beyond imagination has always been the core value of Kharma, which now results in the Kharma Enigma Veyron line. Charles van Oosterum has created the Enigma Veyron line on his journey to create the ultimate audio experience. He has combined technology, experience and knowledge to uplift sound representation to an unknown level of synergy.

The Kharma Enigma Veyron line is the most advanced audio line in the world realizing the Holy Grail in the High-end audio. To create a new level of sound quality and truly offer superior technology that would push the limits of current dynamic loudspeakers was not an easy task. This time fully new engineered Kharma drivers are the basis of the Enigma Veyron loudspeakers, as well as a new cabinet, materials, internal cable technology and more. We decided to offer the whole package to drive the full Enigma Veyron as well. New wide band linear power amps, a complete new touchscreen operated pre-amp, App controlled subwoofer management and massive power distributors as well as a diamond suspended audio rack were developed. Hence many exciting innovations were developed by Kharma to create this unique audio system.

The bass and midrange section of the Veyron loudspeakers are formed by the exclusive Kharma Omega F Drivers. The F stands for 0-Foucault currents, which is a novelty in the audio world, because for the first time no

iron is used in the magnet motor-system, avoiding any interaction. Normally the voice coil induces a Foucault-current into the iron parts and that current induces back distortion into the driver-coil which will distort the original signal by definition. This is now completely gone and the result is a higher resolution, more micro-dynamics, more macro-dynamics, faster transients, more richer spectrum of tonal variations from the music itself, more natural sounding, more explosive sounding, more realistic sounding.

The Enigma Veyron line has magical physical dimensions, which are as impressive as the musical performance the products have to offer. The loudspeaker cabinets are constructed from thick Bullet wood panels and the audio rack and electronics from 38 mm thick aluminium plates. Although the constructions are massive but elegant, all components are decoupled from the surrounding by a minimum contact surface created with Tungsten balls placed on Diamonds. The combination of the hardness, shape and acoustical properties of the materials used, realize the ultimate freedom of resonances.

Kharma has pushed the limits for each component of the Enigma Veyron line. The sound representation and aesthetical beauty is overwhelming and certainly beyond imagination.

## PART LIST

- 1 pair of Elegance Veyron EV2 cabinets
- Manual
- Burn-in CD
- Registration Form
- Quality Certificate
- Certificate of Authenticity

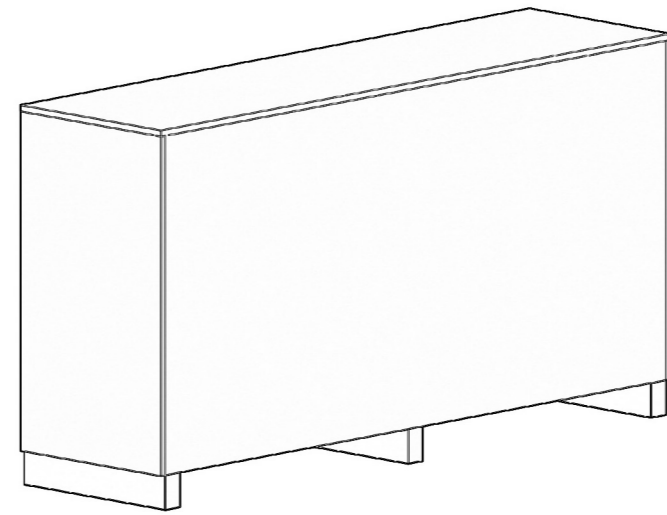
### Important

Please read the manual thoroughly before taking further steps.

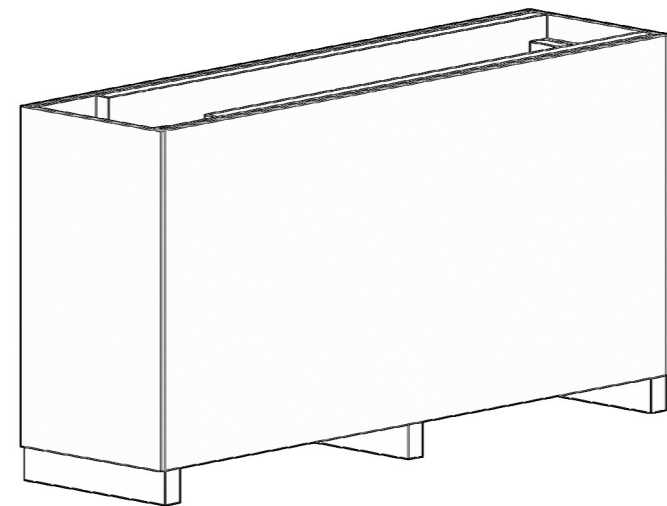
## UNPACKING LOUDSPEAKER

### Opening the crate

Upon opening the crate, inspect the crate carefully for any sign of transport damage. If there is damage, immediately call your dealer or the trucking firm that made the delivery. Do not delay in reporting the damage. Please store the crates for future use.

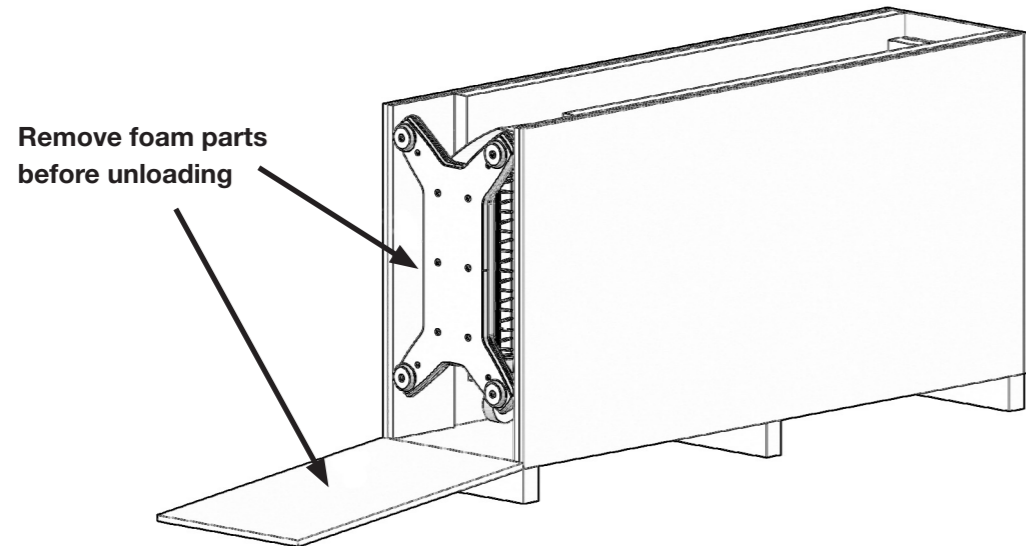


### Step 1: Remove top cover

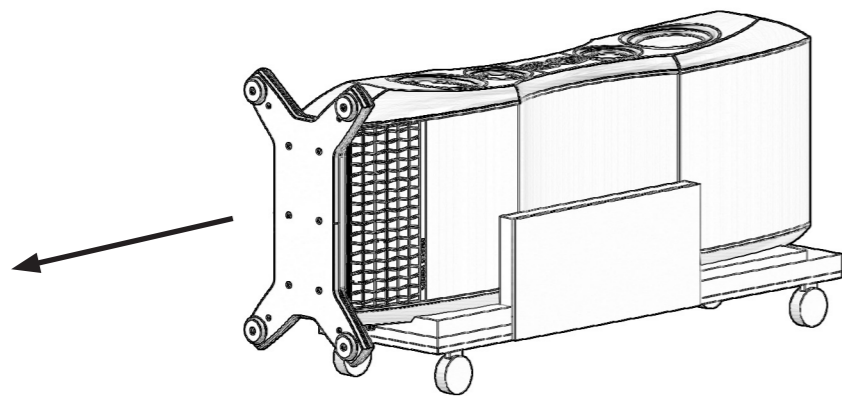


**Step 2: Unscrew bottom**

By unscrewing the crate at the bottom side of the speaker, a ramp will be created to be able to pull the speaker out of the crate.

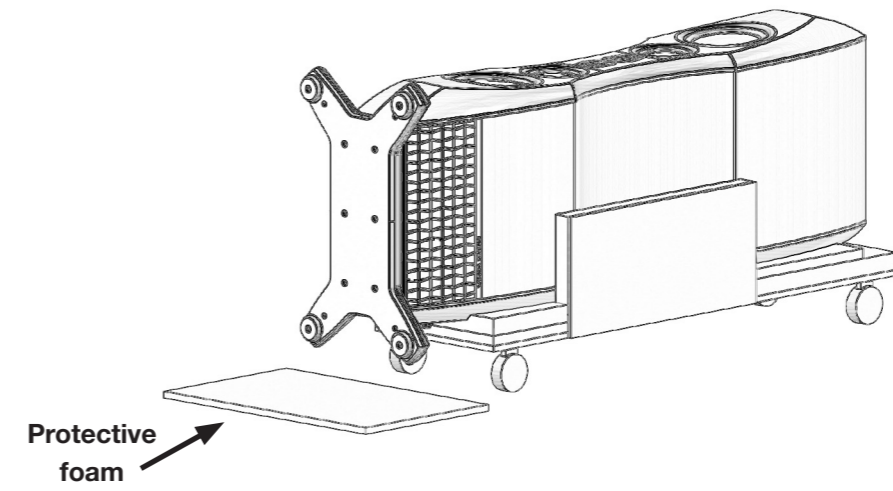


**Step 3: Guide the speaker to final position**



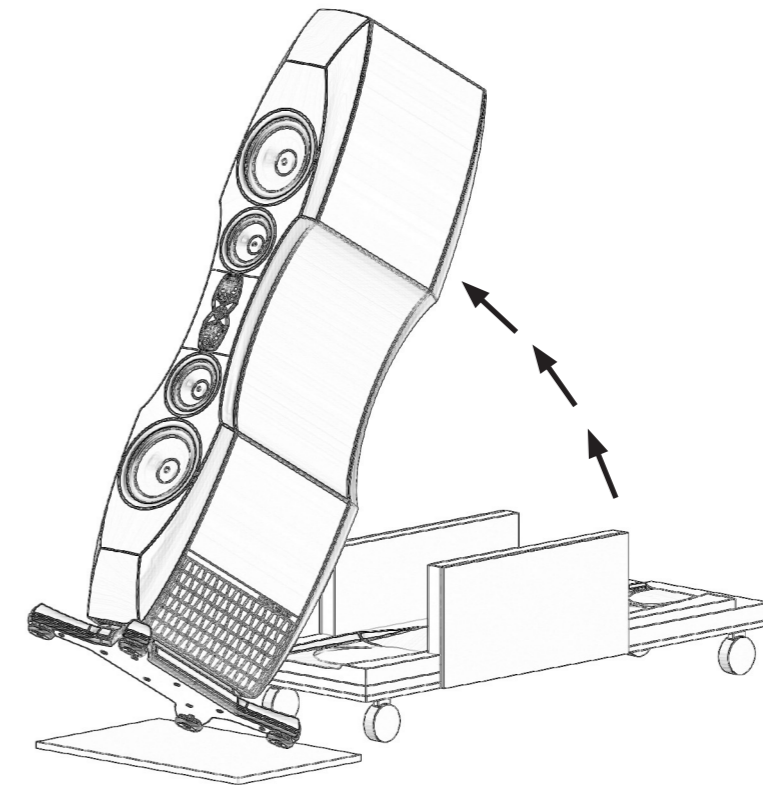
**Step 4: Protect stand**

Before tilting the speaker, put a protective foam on the ground.



**Step 5: Tilt speaker**

Tilt the speaker and leave the cart on the ground. It is advised

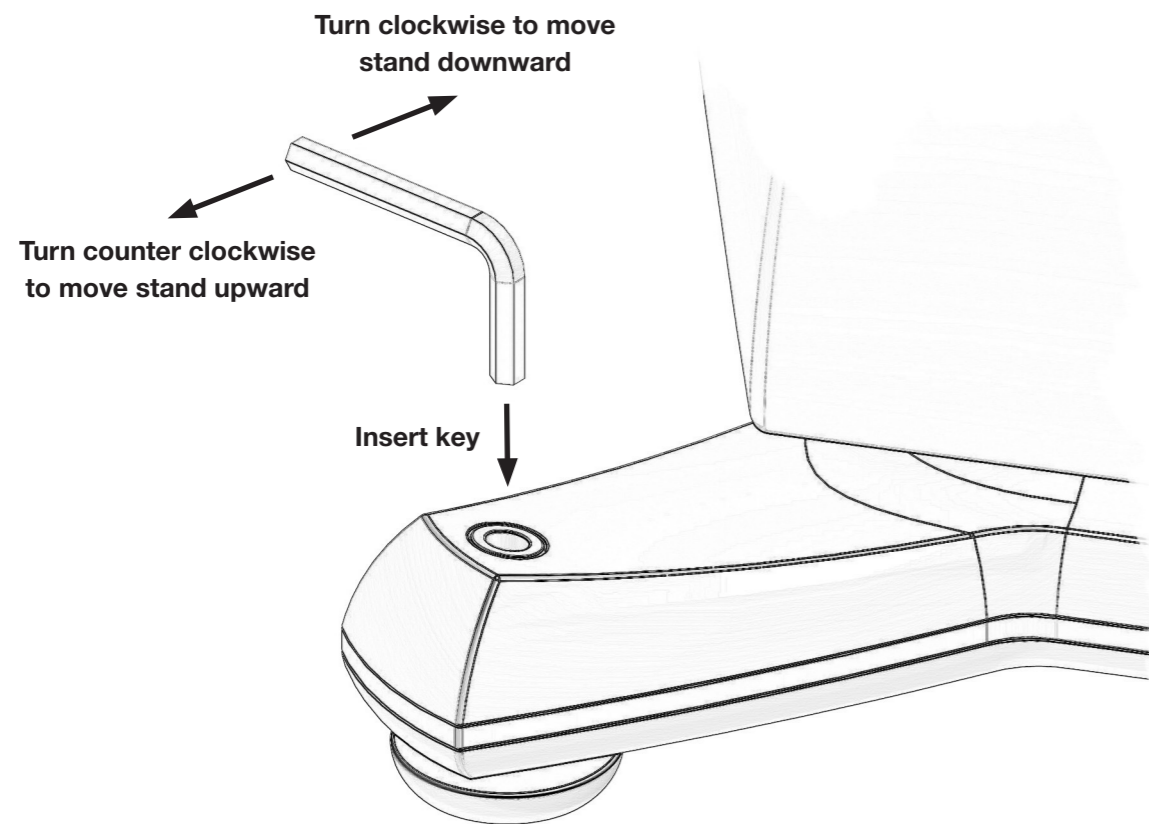


**Important**

Please make sure enough people are present to monitor the process and can correct when required.

### Step 6: Level speaker

The speaker has a stand with integrated Diamond suspension. The discs are already part of the stand and don't need adjustment. A hex key can be used to level the speaker. By inserting the hex key at the top of the stand and turning the hex key, the stand leg moves up or downwards. In this way all four legs can be adjusted to level the speaker.



#### Important

Do not unscrew parts at the bottom of the stand, this will disassemble the stand and makes the stand instable.

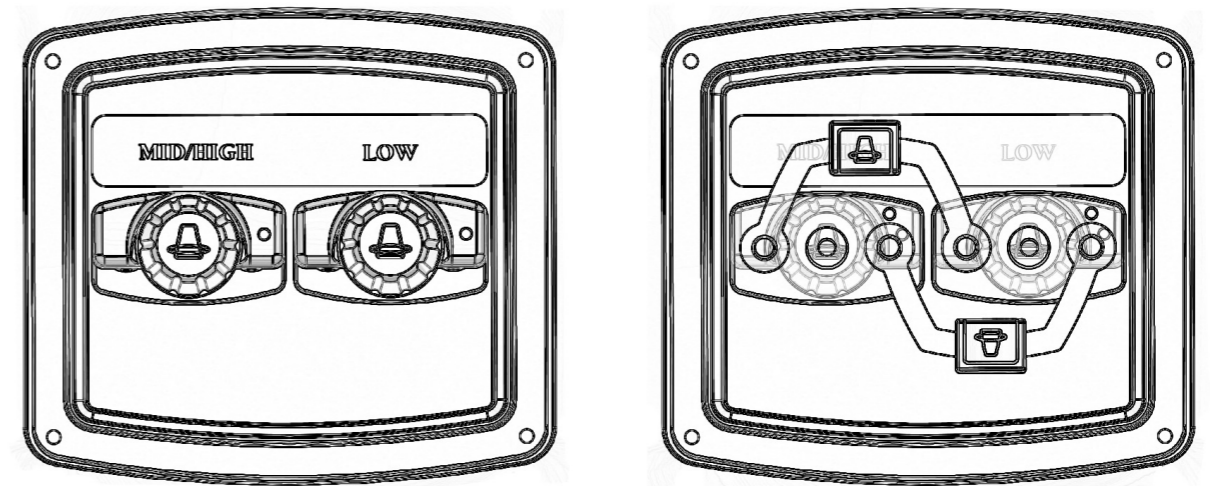
#### Important

Please turn discs as close as possible to the stand when transporting the speaker in horizontal position. This is to make sure the internal Diamond-carborundum construction is fixated during transport.

## CONNECTION

### EV-2D-1.0 / BRIDGE OPTION

At the rear of your Enigma Veyron loudspeaker you will find the high-end Kharma Connection Terminal (as shown below). Be sure you use the same brand, type and length of speaker cable on each channel. Mixing different types and/or lengths of loudspeaker cable can upset the precise timing and balance of your loudspeaker.



The Enigma Veyron is advised to be used with bi-amping or bi-wiring. The left connector drives the mid and high drivers of the speaker and the right connector drives the bass drivers.

When you want to setup your system with only one set of loudspeaker cables, you will have to install the Kharma bridge terminals as indicated in the picture on the right. For best sound quality we advise to connect the cable to the mid/high connector.

#### Important

You will find a short wire fixed to the connection terminal. This wire is fixed to protect the speaker drivers during transport, make sure to remove this wire before installing your cables.

# POSITIONING YOUR SPEAKERS

## Room Acoustics

A good listening room has just the right amount of reflection and absorption. The performance of any loudspeaker depends upon the speaker's location in the room and the acoustical conditions in that part of the room. Furnishing, size and proportions all effect tonal balance, imaging and bass characteristics.

In order to test the sonic balance of your room, stand in the location where the loudspeaker will be installed and clap your hands two or three times. If the room is reverberant, you will hear a sharpness or echo. If the room is dull, the sound of the clap will decay rapidly and there will be little or no echo. Large areas of glass, mirrors and wood-paneling will reflect sound waves and often result in brittleness and extreme brightness.

You can correct this by breaking these sound-waves with softer surfaces; for instance, draperies or wall hangings. In general try to create random reflections.

## Positioning

We recommend experimenting with loudspeaker placement in order to obtain the best spectral balance, openness and perception of depth. For good results, the loudspeakers should be no closer than 45 cm from the rear wall with at least 70 cm to the side walls. The space between the loudspeakers should be free. Ideally the space should be symmetrical in the area around your loudspeakers.

Moving the system towards a wall will increase bass level while generally reducing openness. Moving loudspeakers too far into the room can result in a "thin" overall presentation with loss of bass foundation. The loudspeakers will normally work well straight out and not angled toward the listener for accurate sound staging. The wide dispersion of the Enigma Veyron loudspeaker makes this possible. It is easier to carry out room changes before installing the cone feet which thread into the base.

Many have found the best room position to be along an undraped longer wall, with the loudspeakers as far apart as the listener is for them. The stand under your Enigma Veyron loudspeaker can be adjusted so that the speaker will not "rock" as you push it from side to side.

# USING YOUR KHARMA SPEAKERS

## Advice on cabling

Mixing different types and/or lengths of speaker cable can upset the precise timing and balance of your speaker. We recommend use of our own Kharma Enigma Veyron pure silver-gold loudspeaker cable for maximum result. It's important to connect your speakers in phase, which means that the drivers are moving in and out in the same direction and at the same time, in order to obtain the best localization of instruments and voices as well as the deepest, most natural bass.

## Advice on amplifier

Your Enigma Veyron loudspeaker is a high-performance system, using ultra high quality drivers. Like all loudspeakers they will reproduce distortion as well as music. Therefore the choice of other audio components is critical and should be made with care. When a speaker system is as revealing as your Enigma Veyron loudspeaker is, musical colorations and other forms of distortion become more noticeable because these aberrations are no longer masked by the speaker.

We recommend using an amplifier with sufficient power, typically a minimum of 50 Watt. Better use a high-power amplifier instead of an underpowered amplifier that can cause driver damage due to clipping distortion. This kind of damage is considered and will not be covered under warranty.

## Use common sense

If you hear distortion or loud "cracking" sounds, the amplifier or loudspeaker is being overdriven, turn the volume down immediately.

## Burn-in

Your Enigma Veyron loudspeaker system needs quite a bit of playing time to reach maximum result. The use of a Burn-in test-CD is recommended to speed up this process. With a "burn-in" test CD, burn-in time is reduced to approximately 50 hours. After burning-in your system, you can play demagnetizing tracks for maximum clarity. Your system will then be optimized and sound more open, more detailed and display more natural musical warmth.

# TAKING CARE OF YOUR SPEAKERS

Use a soft cloth and a spray-cleaner to clean the surface. Be careful not to spray on the grill cloth. Use a slightly wetted piece of foam to gently rub the cloth of the front panel. No further care is necessary.

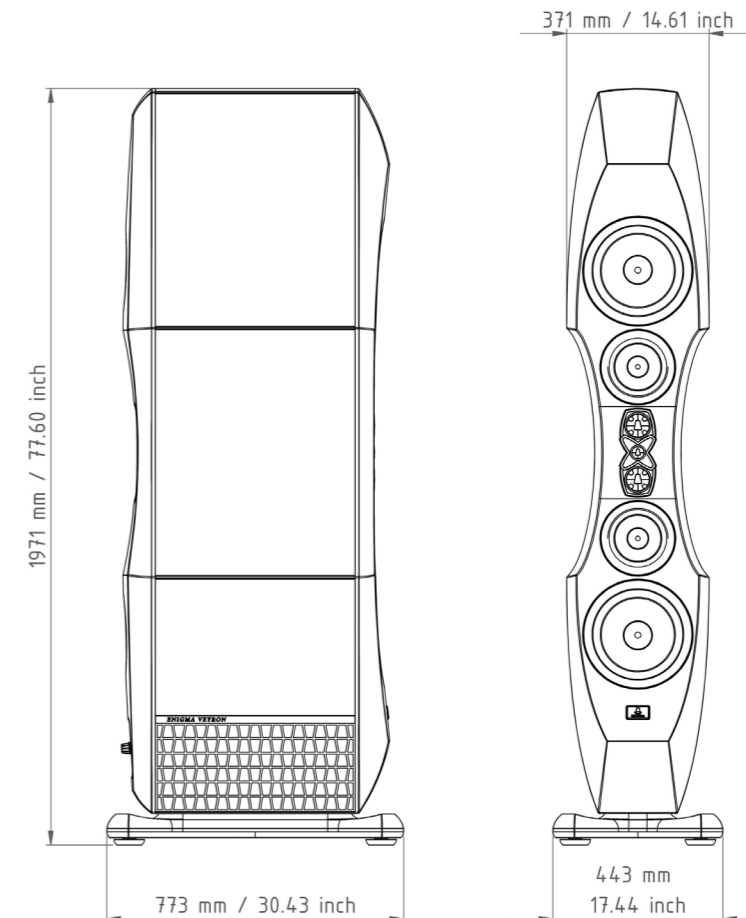
In event of trouble Note that you can use your amplifier's two channels of information for simple troubleshooting. If the sound quality is distorted, listen to each speaker separately to check if the fault is present in both. If it is, then the trouble is likely to be elsewhere in your system. If the fault is in one channel only, reverse the outputs from your amplifier to the speakers(right-to-left and left-to-right). If the distortion moves to the other channel, the fault is not the speaker. This technique may also be used to locate a fault between the signal source and preamp/receiver and/or between preamp and power amp(s). If you have been unsuccessful in locating the specific source of trouble or if you have located it, but have been unable to correct it, please consult the Authorized Kharma-dealer from whom you purchased the system. Kharma Dealers are audio specialists and can be of great assistance.

# SPECIFICATIONS

## EV-2D-1.0

<b>System</b>	Virtual point source 4-way system
<b>High-frequency</b>	1 x 1-inch Diamond concave tweeter 2 x 2-inch Diamond concave tweeter
<b>Mid-frequency</b>	2 x 7-inch Kharma Omega-F Driver
<b>Low-frequency</b>	2 x 11-inch Kharma Omega-F Driver
<b>RMS power</b>	500 Watt
<b>Program power</b>	1000 Watt
<b>Frequency Range</b>	24 Hz - 90 kHz
<b>Sensitivity</b>	93 dB
<b>Maximum SPL</b>	120 dB
<b>Nominal impedance</b>	4 Ohm
<b>Minimal impedance</b>	3.4 Ohm

<b>Dimensions</b>	incl. stand
<b>Height</b>	1971 mm / 59.69 inch
<b>Width</b>	443 mm / 16.81 inch
<b>Depth</b>	773 mm / 32.87 inch



# WARRANTY

## WARRANTY COVERAGE

The Kharma distributor guarantees the proper mechanical and electrical functioning of its products for a period of 5 years. Provided the warranty request card is properly filled out and sent to the address on the warranty form, including a copy of the original bill of sales. Should the customer fail to meet the three requirements mentioned above, the warranty will be limited to a period as required by national law only. In case of malfunction the customer has to present the Kharma product in its original packing to an authorized dealer. If qualified service appears inevitable, the dealer will ship the product to an appointed service station or to the factory, depending on the required service. This warranty includes parts and labour. This warranty is not automatically transferable; subsequent owners can request a warranty at the factory.

## WARRANTY EXCLUSION

1. Transportation damage, visible or hidden. Damage should be reported immediately to the transport company. Registration of the complaint should be sent to the Kharma distributor previously mentioned.
2. Scratches in painted and metal surfaces. Complaints should be registered at the dealer within three days after the sale.
3. Damage due to illicit handling and inappropriate use.
4. Transportation costs to service station or factory.
5. Damage through unauthorized repair and or modification.
6. Subsequent damage to other appliances.
7. Refund of costs in case of unauthorized repair.
8. Malfunctions caused by use for commercial or professional purposes.
9. All claims on Kharma products obtained through unauthorized sources, with or without correct serial numbers.

**Kharma International b.v.**

Kalshoven 7 4825 AL Breda The Netherlands