

Enigma Veyron Audio Rack User Guide

EV-RK-TL
EV-RK-ML
EV-RK-BL

Table of content

3	Preface
4	Introduction to the Enigma Veyron System
6	Part list
7	Unpacking
10	Installation
13	Dimensions
14	Warranty

Preface

Congratulations,

You are now the owner of the Kharma Enigma Veyron Audio Rack. Your new audio rack, properly installed, will give you all the satisfaction and enjoyment you expect from Kharma.

As with any high quality product, special care must be taken to install your audio rack. Please read this manual carefully and totally prior to installation.

Important Please read the manual thoroughly before taking further steps.

Introduction to the Enigma Veyron

Above and beyond imagination has always been the core value of Kharma, which now results in the Kharma Enigma Veyron System. Charles van Oosterum has created the Enigma Veyron System on his journey to create the ultimate audio experience. He has combined technology, experience and knowledge to uplift sound representation to an unknown level of synergy.

The Kharma Enigma Veyron system is the most advanced audio system in the world realizing the Holy Grail in the High-end audio. To create a new level of sound quality and truly offer superior technology that would push the limits of current dynamic loudspeakers was not an easy task. This time fully new engineered Kharma drivers are the basis of the Enigma Veyron, as well as a new cabinet, materials, internal cable technology and more. We decided to offer the whole package to drive the full Enigma Veyron as well. New wide band linear power amps, a complete new touchscreen operated pre-amp, App controlled subwoofer management and massive power distributors as well as a diamond suspended audio rack were developed. Hence many exciting innovations were developed by Kharma to create this unique audio system.

The bass and midrange section of the Veyron are formed by the exclusive Kharma Omega 7-F Drivers. The F stands for 0-Foucault currents, which is a novelty in the audio world, because for the first time no iron is used in the magnet motor-system, avoiding any interaction. Normally the voice coil induces a Foucault-current into the iron parts and that current induces back distortion into the driver-coil which will distort the original signal by definition. This is now completely gone and the result is a higher resolution, more micro-dynamics, more macro-dynamics, faster transients, more richer spectrum of tonal variations from the music itself, more natural sounding, more explosive sounding, more realistic sounding.

Moreover, Kharma created the largest Diamond cone surface ever used in a loudspeaker. To create extreme resolution and dispersion for the upper mid and lower high frequency Kharma has used 4 x 50 mm diamond tweeters. For the ultimate clear high frequencies, far beyond hearing, four Diamond tweeters of 25 mm are being used. These 8 tweeters with a combined surface of around 400 square centimeters are just for one loudspeaker.

The Enigma Veyron System has magical physical dimensions, which are as impressive as the musical performance this loudspeaker has to offer. The loudspeaker cabinets are constructed from 100 mm thick Bullet wood panels and the audio rack and electronics from 38 mm thick aluminium plates. Although the constructions are massive but elegant, all components are decoupled from the surrounding by a minimum contact surface created with Tungsten balls placed on Diamonds. The combination of the hardness, shape and acoustical properties of the materials used, realize the ultimate freedom of resonances.

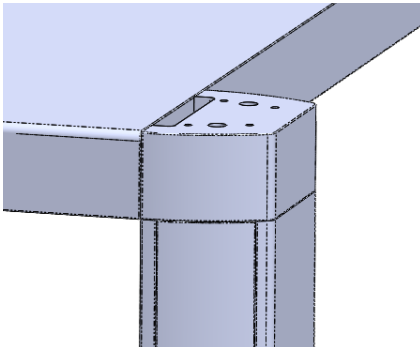
Kharma has pushed the limits for each component of the Enigma Veyron system. The sound representation and aesthetical beauty is overwhelming and certainly beyond imagination.

Part list

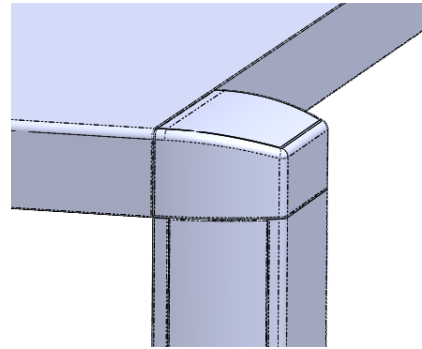
Each crate contains:

- 1 x Enigma Veyron Audio Rack*
- 4 x Stand Disc with single or triple Diamond**
- 1 x Manual

* Dependent on your rack configuration, the crates contains the bottom level (EV-RK-BL), middle level (EV-RK-ML) or top level (EV-RK-TL) of the Enigma Veyron Audio Rack.

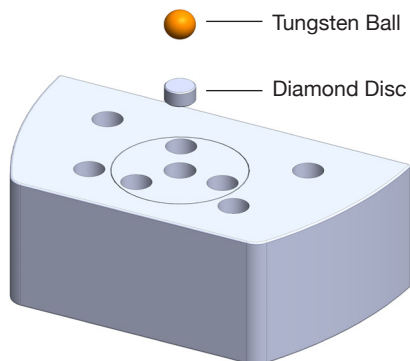


Bottom Level (EV-RK-BL) or
Middle Level (EV-RK-ML)

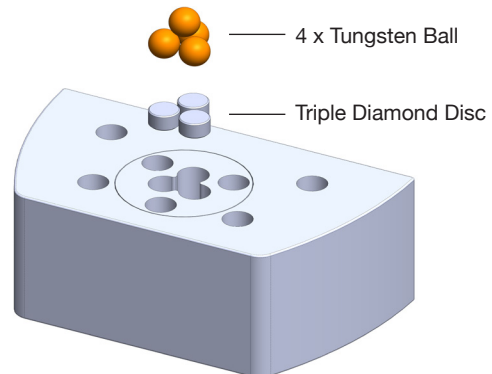


Top Level (EV-RK-TL)

** The bottom level of the audio rack will be equipped with a stand disc with triple Diamonds. This is to prevent the Diamond discs to crack under the total weight of the audio rack and equipment combined. The middle and top level will have a stand disc with single Diamond



Single Diamond Stand

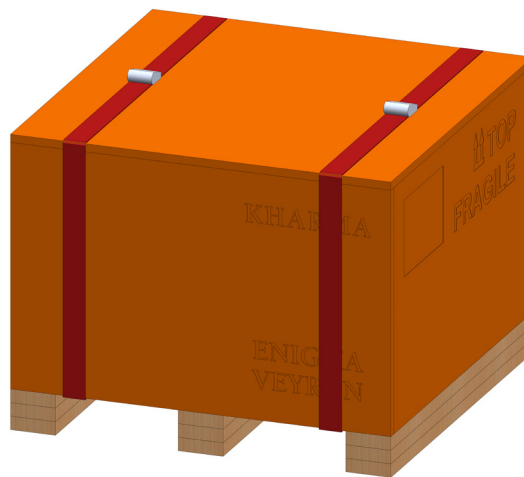


Triple Diamond Stand

Unpacking

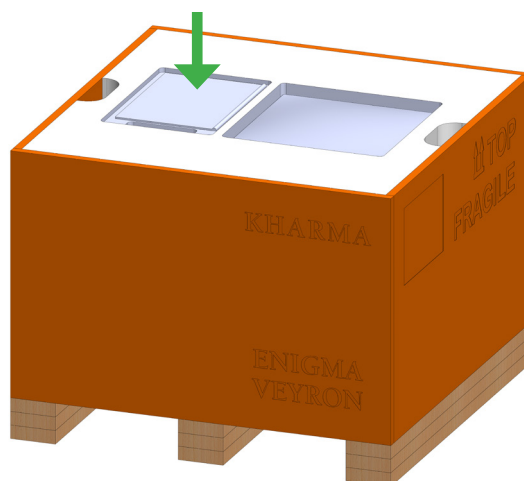
Opening the crate

Upon opening the crate, inspect the crate carefully for any sign of transport damage. If there is damage, immediately call your dealer or the trucking firm that made the delivery. Do not delay in reporting the damage. Please store the crates for future use.



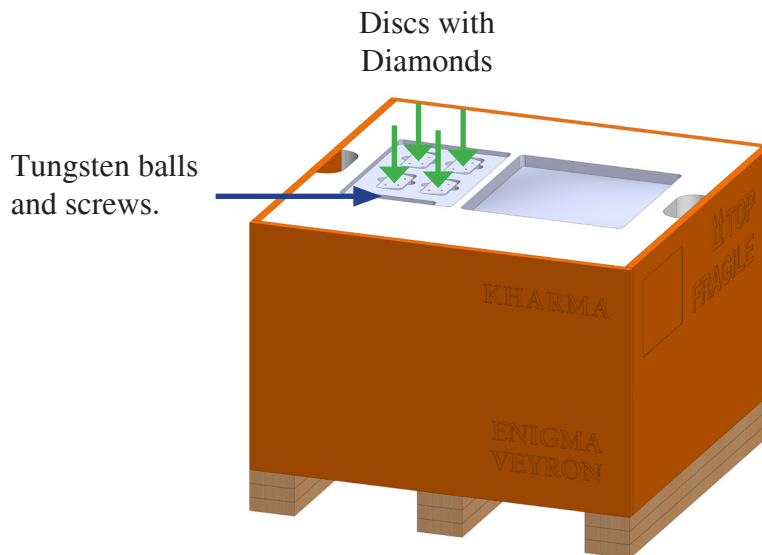
Step 1: Remove top cover

Note: Read the manual before further installation

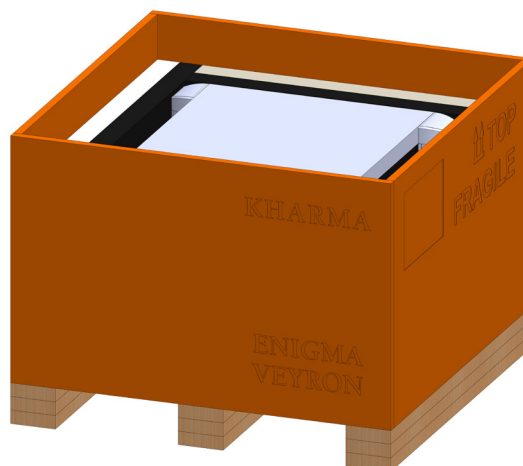


Step 2: Remove the Stand discs

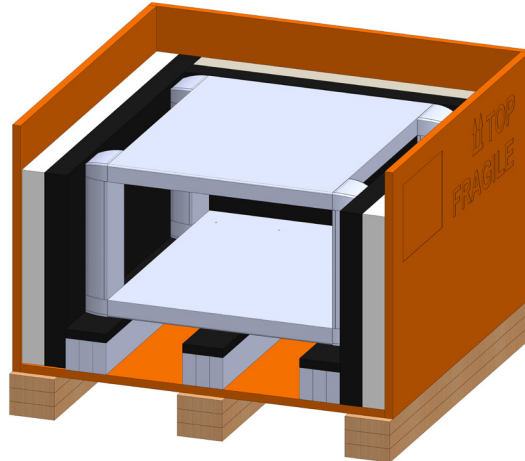
The stand discs will be executed with a single or triple Diamond, dependent on the configuration of the audio rack. The Tungsten Balls are packed separately, where the Diamond discs are already placed in the aluminium discs. Please prepare the discs as shown on page 6.



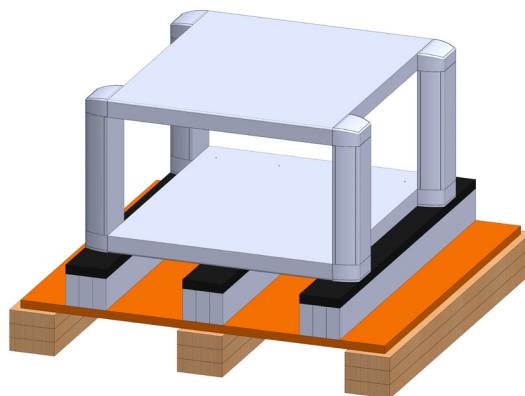
Step 3: Remove foam cover



Step 4: Unscrew front panel

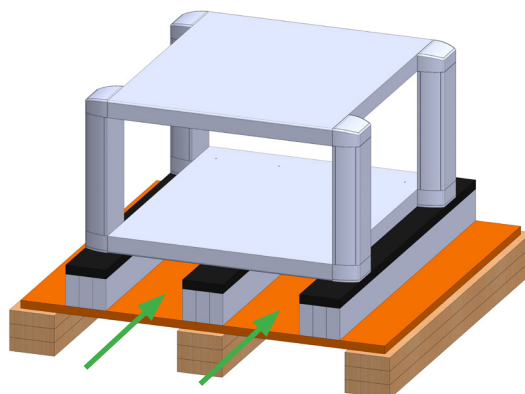


Step 5: Unscrew all panels



Step 6: Lift rack from pallet

The openings underneath the rack can be used in combination with a hoist structure. Please always use protective foam between the lift construction and rack.



Installation

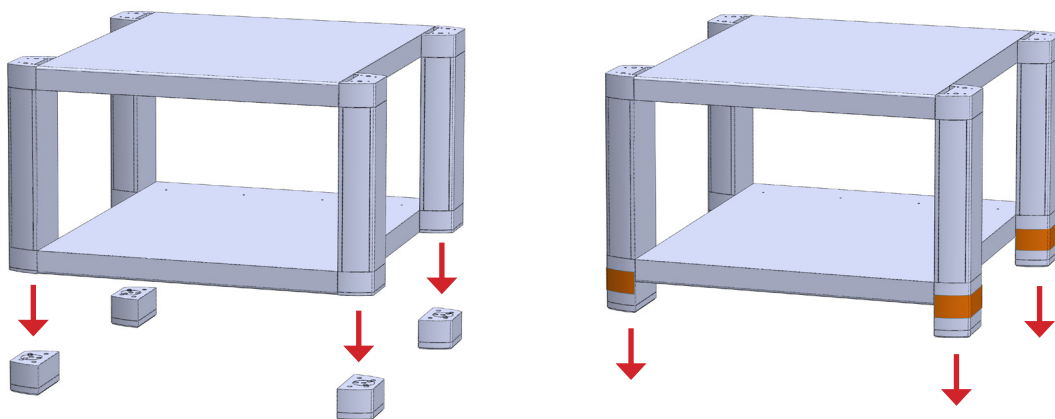
The Enigma Veyron Audio Rack consists out of modular rack levels. Each level should be positioned carefully and precise. All levels will have to be placed on Diamond discs, which have a small surface and can not handle high impact.

Important

The Diamond discs may not be exposed to high impact. The Diamonds can only handle continuous load.

Step 1: Place rack carefully on Diamond Stands.

For the bottom level use EV-RK-BL illustrated on page 7. Please make sure the Triple Diamond Stands are being used. This is to prevent the Diamond discs to crack under the total weight of the audio rack and equipment combined.



Basic installation: lower the rack on the stand

Tip: Tape the stand to the rack level and lower the entire level at once

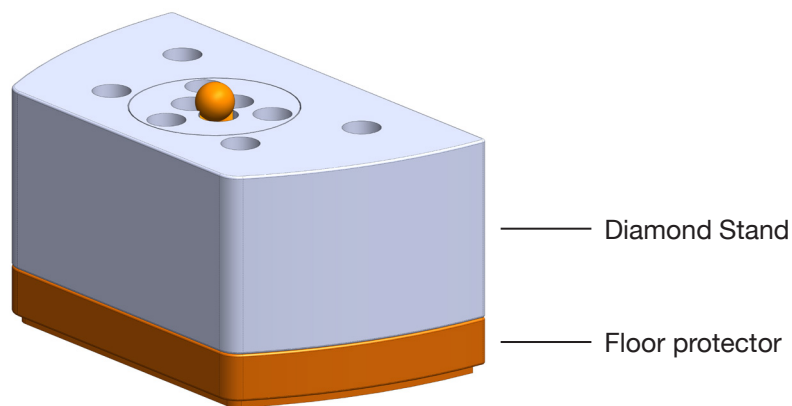
Important

Make sure you put the tungsten balls on the Diamond discs before lowering the rack on the stands.

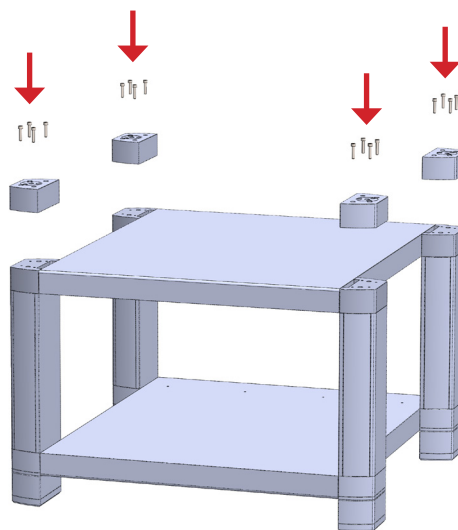
Note: When the Audio Rack is consisting of less than 3 levels, single Diamond Stands are being provided.

Important

Although the Diamond stands have a floor protector with felt for the bottom level, do not try to reposition the rack after placing the rack on the Diamond discs. The discs should be removed again before repositioning.

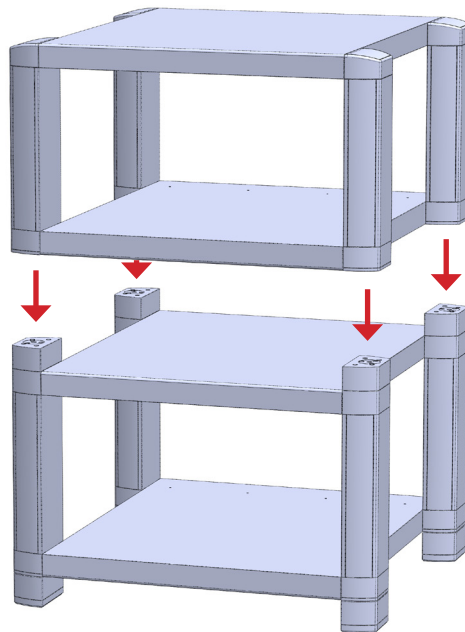

Step 2: Assemble stands for second level

A second level can be placed on top of the bottom level by screwing the Diamond Stands (delivered with the second level) on the bottom level.



Step 3: Place new level

When the audio rack is consisting of 2 levels, slowly lower EV-RK-TL on top of the Diamond Stands. When a third level is required, use EV-RK-ML and continue with step 2.

**Important**

Make sure you put the tungsten balls on the Diamond discs before lowering the rack on the stands.

Dimensions

Dimensions Bottom Level

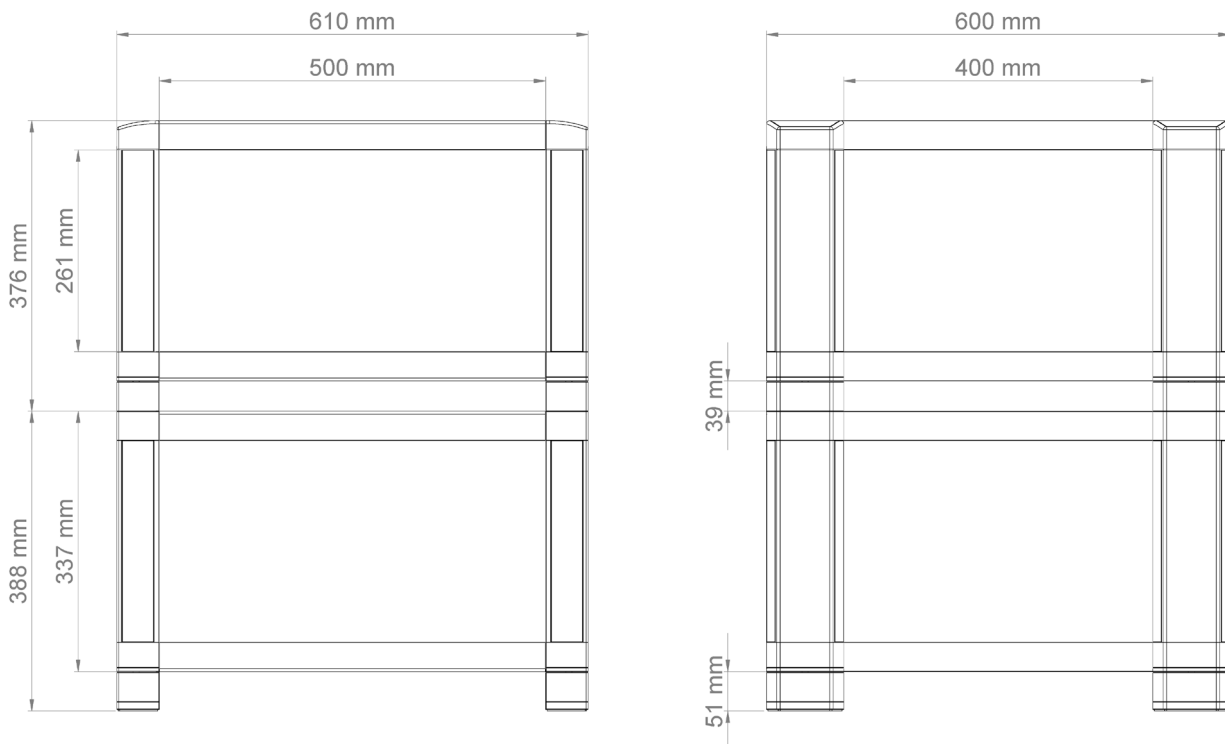
Height	388 mm / 15.3 inch
Width	610 mm / 24.0 inch
Depth	600 mm / 23.6 inch

Dimensions Middle Level / Top Level

Height	376 mm / 14.8 inch
Width	610 mm / 24.0 inch
Depth	600 mm / 23.6 inch

Nett Weight **78 kg / 172 lbs**

Note: The bottom level has a different height, because there is an additional block screwed under the stands. This block has felt to protect the floor from scratches.



Warranty

Warranty coverage

The Kharma distributor guarantees the proper mechanical and electrical functioning of its products for a period of 5 years. Provided the warranty request card is properly filled out and sent to the address on the warranty form, including a copy of the original bill of sales. Should the customer fail to meet the three requirements mentioned above, the warranty will be limited to a period as required by national law only.

In case of malfunction the customer has to present the Kharma product in its original packing to an authorized dealer. If qualified service appears inevitable, the dealer will ship the product to an appointed service station or to the factory, depending on the required service. This warranty includes parts and labour. This warranty is not automatically transferable; subsequent owners can request a warranty at the factory.

Warranty exclusion

1. Transportation damage, visible or hidden. Damage should be reported immediately to the transport company. Registration of the complaint should be sent to the Kharma distributor previously mentioned.
2. Scratches in painted and metal surfaces. Complaints should be registered at the dealer within three days after the sale.
3. Damage due to illicit handling and inappropriate use.
4. Transportation costs to service station or factory.
5. Damage through unauthorized repair and or modification.
6. Subsequent damage to other appliances.
7. Refund of costs in case of unauthorized repair.
8. Malfunctions caused by use for commercial or professional purposes.
9. All claims on Kharma products obtained through unauthorized sources, with or without correct serial numbers.