

OMNI SERIES SUBWOOFERS



Mirage[®]
REDEFINING SOUND

The Mirage OMNI Series Subwoofers

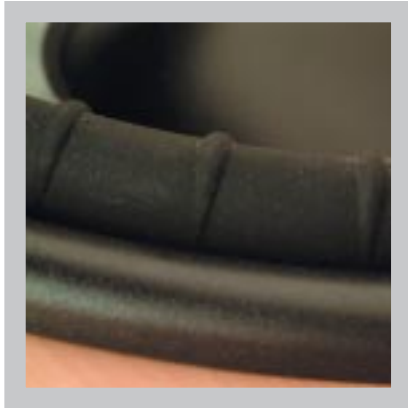
Featuring Mirage's Patented Ribbed Elliptical Surround™

BREAKTHROUGHS DON'T HAPPEN OVERNIGHT

For 30 years, Mirage has been obsessed with creating the most realistic and powerful sound possible from a speaker. One of the toughest challenges was inventing a subwoofer that created true depth without distortion. That's why the OMNI Series Subwoofers are a truly miraculous audio discovery. Finally you can enjoy a subwoofer with top quality performance and near ZERO distortion. This is achieved through Mirage's patented Elliptical Surround Technology™. With conventional woofers, outward and inward cone movement is never the same because the surround flexes differently as it moves. Due to the shape of the

Elliptical Surround, the cone movement in either direction is identical, resulting in no distortion. Another

problem with conventional subwoofers is surround dimpling. Dimples that occur on normal subwoofers radiate in and out of phase, causing distortions at all listening levels. The more the cone moves, the more the surround dimples.

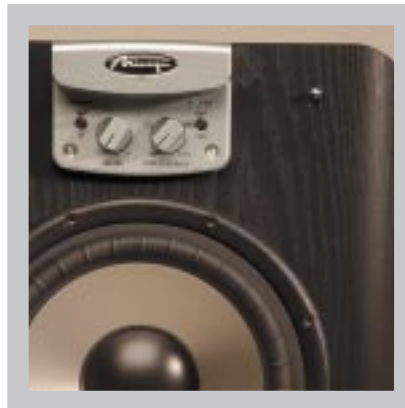


With Mirage's exclusive patented rib design, the ribs either expand or contract based on their position and the position of the cone. The expansion and contraction of the ribs eliminate any dimpling that can occur, thereby eliminating the distortion that dimpling creates. Mirage's unique way to eliminate distortions are a huge leap forward in audio innovation, as speaker distortion is generally taken for granted, but has a large effect on how a system sounds.

OUR COMPETITORS ARE SHAKING

The OMNI Series Subwoofers' elliptical surround allows for larger cone surface, resulting in greater efficiency when compared to conventional subwoofers. The

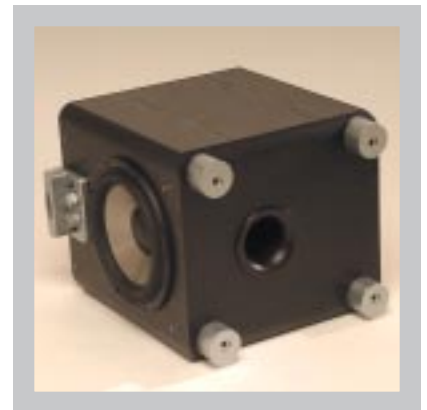
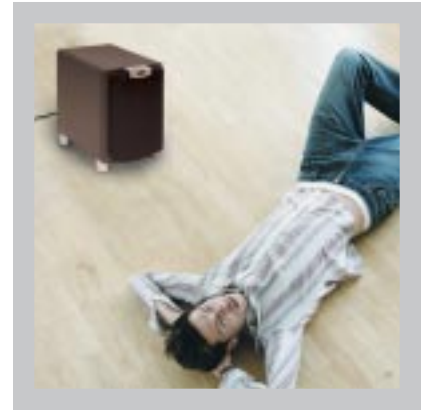
Elliptical Surround design also allows for greater peak to peak movement. When compared to other subwoofers on the market, these newly designed drivers travel more than double the distance of the competition. The combination of these attributes enables the OMNI Series Subwoofers to move incredible amounts of air even with smaller sized woofers. This results in more output and efficiency, allowing the OMNI Series Subwoofer to play louder and deeper.



NOT JUST A PRETTY FACE

After extensive testing, the OMNI Series S10 was measured as being capable of producing 200 Watts of continuous power output, while the S12 was confirmed at 300 Watts. Due to our scrupulous testing standards and effort, these two subwoofers received legitimate FTC approval at these power output levels, a rare distinction few others have achieved and we were honoured to receive.

Mirage's stylish new OMNI Series Subwoofers are available in a variety of colors, and due to their surprisingly compact design, can easily integrate into virtually any listening environment. If you're looking for a subwoofer that will bring depth and clarity to a new level, look no further than the OMNI Series Subwoofers.



TOP QUALITY SOUND - NO DISTORTION



TECHNICAL SPECIFICATIONS



OMNI S8		OMNI S10		OMNI S12	
System Type:	Bass Reflex with Downward Firing Port	System Type:	Bass Reflex with 2 Downward Firing Ports	System Type:	Bass Reflex with 2 Downward Firing Ports
Amplifier Power Output:	100 Watts Continuous, 400 Watts Dynamic peak	Amplifier Power Output:	200 Watts Continuous, 800 Watts Dynamic Peak	Amplifier Power Output:	300 Watts Continuous, 1200 Watts Dynamic Peak
Woofer:	8" Polypropylene Titanium Deposit Hybrid with Elliptical Surround™	Woofer:	10" Polypropylene Titanium Deposit Hybrid with Elliptical Surround™	Woofer:	12" Polypropylene Titanium Deposit Hybrid with Elliptical Surround™
Voice Coil Diameter:	1"	Voice Coil Diameter:	1.5"	Voice Coil Diameter:	2"
Maximum Driver Excursion:	1.49" Peak-to-Peak	Maximum Driver Excursion:	1.57" Peak-to-Peak	Maximum Driver Excursion:	1.61" Peak-to-Peak
Frequency Response:	27Hz-120Hz +/- 3dB	Frequency Response:	21Hz-120Hz +/- 3dB	Frequency Response:	19Hz-120Hz +/- 3dB
Phase Switch:	0/180 Degrees	Phase Switch:	0/180 Degrees	Phase Switch:	0/180 Degrees
Variable Low Pass Filter:	40Hz-120Hz @ 18dB/octave	Variable Low Pass Filter:	40Hz-120Hz @ 18dB/octave	Variable Low Pass Filter:	40Hz-120Hz @ 18dB/octave
Inputs:	Low Level, Stereo High Level (Speaker Level)	Inputs:	Low Level, Stereo High Level (Speaker Level)	Inputs:	Low Level, Stereo High Level (Speaker Level)
Crossover Filter Switch:	On/Off	Crossover Filter Switch:	On/Off	Crossover Filter Switch:	On/Off
Power Switch:	Off/Auto/On	Power Switch:	Off/Auto/On	Power Switch:	Off/Auto/On
Dimensions (HxWxD):	inches: 14.6 X 11.7 X 15.3	Dimensions (HxWxD):	inches: 17.0 X 14.7 X 18.5	Dimensions (HxWxD):	inches: 19.2 X 15.7 X 19.4
	mm: 370 X 296 X 389		mm: 431 X 373 X 469		mm: 490 X 398 X 493
Weight:	29 lbs. / 9.5 kg.	Weight:	41 lbs. / 18.6 kg.	Weight:	51 lbs. / 23.1 kg.
Colors:	Black/Platinum	Colors:	Black/Platinum/Cherry	Colors:	Black

Specifications subject to change without notice. Color availability limited in some countries.



www.miragespeakers.com

MIRAGE WORLDWIDE

NORTH AMERICA | API, 3641 McNicoll Avenue, Toronto, Ontario, Canada M1X 1G5 • Tel: 416.321.1800
AUSTRALIA | Audio Products Pty Ltd, Unit 6,61-67 O'Riordian S, Alexandria, Australia 2015 • Tel: +612 966 93477
EUROPE | API Europe, BV Poppenbouwing 56, Geldermalsen, Netherlands, 4191 Nz • Tel: +31345588080
UK | API (UK) Ltd., 8 Marchmont Gate, Boundary Way, Hemel Hempstead, Herts, HP2 7BF, UK • Tel: +01442 233853