

Masterpieces in 3D art.



1503 *Leonardo da Vinci's complex three dimensional designs are hailed as some of the most extraordinary and beautiful in geometry.*



2003 *Critics rave about Mirage's latest Omni Series speakers which use the revolutionary OMNIGUIDE to deliver true 3D sound.*

Mirage

OMNISERIES

S O U N D E X P E R I E N C E

Announcing the birth of a modern classic.

1503



Five centuries ago, Leonardo da Vinci wowed the art world with his intricate three-dimensional patterns that critics hailed as "extraordinary".

That, in a word, is how respected audio reviewers are describing Mirage's newest OMNI Series speakers whose three-dimensional, true-to-life sound is giving new meaning to 'state of the art'.

The OMNI Series uses Mirage's proprietary Omnipolar technology to create a greater sense of realism. It accomplishes this by recreating the same ratio of direct to reflected sound that you would



Leonardo da Vinci, creator of the Mona Lisa, wins critical acclaim for his complex and beautiful three dimensional geometrical designs.

experience in a typical room or theater setting. Research shows that approximately 30 per cent of what we hear is direct sound while the rest is reflected off walls, the ceiling and objects in the room, thus reaching our ears a fraction of a second later. It is this reflected sound that provides the sense of space and adds depth to music.

OMNI Series speakers feature the OMNIGUIDE, a

proprietary component that includes the Pure Titanium Hybrid tweeter, titanium deposit drivers, and dispersion modules to achieve this very same three-dimensional sound experience.

The small size of the OMNI 50, OMNI 60, OMNI CC center channel and OMNI FX surround speakers makes them truly versatile, allowing them to be placed virtually anywhere in your room - on a

bookshelf, mounted on the wall or even on the ceiling. All speakers, except for the FX (available in black and white), come in black and cherry and can be used with the grille on or off to fit into any decor.

The larger OMNI 250 and OMNI 260 also come with a spiked foot kit to improve bass performance of your speaker.

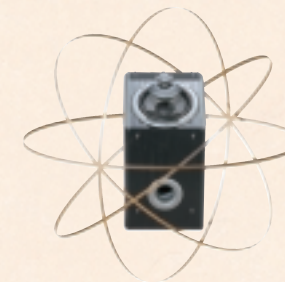
Set up the OMNI Series with Mirage's OM-200 or LF Series subwoofers and you can enjoy the ultimate home theater experience.

Perfect 3-D sound. Da Vinci would approve.

The small size and Omnipolar dispersion of the OMNI 50, OMNI 60, OMNI CC and OMNI FX means you can place them virtually anywhere, even on a table or in a bookshelf.

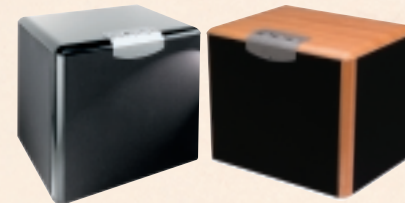


The OMNI 250 and OMNI 260 come equipped with a spiked foot kit to improve the bass performance of the speaker.



OMNI Series speakers use Mirage's proprietary Omnipolar technology to deliver perfect sound in every direction.

Set up your OMNI Series speakers with Mirage's OM-200 Series subwoofers, pictured right, or the LF Series for the ultimate home theater experience.



2003



Mirage's Head Engineer and OMNI Series creator Andrew Welker wins critical acclaim for the OMNIGUIDE, which delivers natural, 3D sound.





PRODUCT SPECIFICATIONS



Images not to scale

	OMNI 260	OMNI 250	OMNI 60	OMNI 50	OMNI CC	OMNI FX
System Type:	Magnetically Shielded Omnipolar Tower	Magnetically Shielded Omnipolar Tower	Magnetically Shielded Omnipolar Bookshelf	Magnetically Shielded Omnipolar Bookshelf	Magnetically Shielded Omnipolar Center Channel	Omnipolar Surround Channel
Frequency Response:	35Hz-20KHz, +/- 3dB	40Hz-20KHz, +/- 3dB	45Hz-20KHz, +/- 3dB	55Hz-20KHz, +/- 3dB	50Hz-20KHz, +/- 3dB	80Hz-20KHz, +/- 3dB
Tweeter:	1" (25mm) PTH™ Pure Titanium Hybrid	1" (25mm) PTH™ Pure Titanium Hybrid	1" (25mm) PTH™ Pure Titanium Hybrid	1" (25mm) PTH™ Pure Titanium Hybrid	1" (25mm) PTH™ Pure Titanium Hybrid	1" (25mm) PTH™ Pure Titanium Hybrid
Midrange:					3" Polypropylene Titanium Deposit Hybrid	
Woofer:	Two 6-1/2" Polypropylene Titanium Deposit Hybrid	Two 5-1/2" Polypropylene Titanium Deposit Hybrid	6-1/2" Polypropylene Titanium Deposit Hybrid	5-1/2" Polypropylene Titanium Deposit Hybrid	Two 4-1/2" Polypropylene Titanium Deposit Hybrid	5-1/2" Polypropylene Titanium Deposit Hybrid
Crossover Pts:	700Hz, 2KHz	700Hz, 2KHz	2KHz	2KHz	500Hz, 2KHz	2KHz
Room Efficiency:	93dB	93dB	91dB	91dB	90dB	90dB
Impedance:	8-ohms nominal, 4-ohms minimum	8-ohms nominal, 4-ohms minimum	8-ohms nominal, 4-ohms minimum	8-ohms nominal, 4-ohms minimum	8-ohms nominal, 4-ohms minimum	8-ohms nominal, 4-ohms minimum
Recommended Amp. Power:	Up to 200-watts RMS/Channel	Up to 150-watts RMS/Channel	Up to 125-watts RMS/Channel	Up to 100-watts RMS/Channel	Up to 150-watts RMS/Channel	Up to 125-watts RMS/Channel
Inputs:	High Quality 5-way Terminals	High Quality 5-way Terminals	High Quality 5-way Terminals	High Quality 5-way Terminals	High Quality 5-way Terminals	High Quality 5-way Terminals
Dimensions (H x W x D):	42 x 9 x 15 (in) 107 x 23 x 38 (cm)	38 x 8 x 13 (in) 97 x 20 x 33 (cm)	16 x 9 x 12 (in) 40 x 23 x 31 (cm)	14 x 8 x 10 (in) 36 x 20 x 25 (cm)	8 x 21 x 10 (in) 20 x 53 x 25 (cm)	11 x 8 x 7 (in) 28 x 20 x 18 (cm)
Finishes:	Black and Cherry	Black and Cherry	Black and Cherry	Black and Cherry	Black and Cherry	Black and White
Weight:	1 speaker 55lbs / 25kg	1 speaker 45lbs / 20.45kg	2 speakers 38lbs / 17.27kg	2 speakers 31lbs / 14.09kg	1 speaker 25lbs / 11.34kg	1 speaker 9lbs / 4.09kg

Specifications subject to change without notice.

"Mirage", the "Mirage" logo, "Omnipolar", "Omnitech" and "OmniGuide" are trademarks of Audio Products International Corp.

www.miragespeakers.com



MIRAGE WORLDWIDE

NORTH AMERICA

Mirage Loudspeakers
3841 McNicoll Avenue,
Toronto, Ontario,
Canada M1X 1G5
Tel: 416.321.1800

AUSTRALIA

Mirage Loudspeakers
Audio Products Pty Ltd,
Unit 6, 61-67 O'Riordian S,
Alexandria, Australia 2015
Tel: +612 966 93477

EUROPE

Mirage Loudspeakers
API Europe BV,
Poppenbouwing 56,
Geldermalsen, Netherlands,
4191 Nz
Tel: +31345588080

UNITED KINGDOM

Mirage Loudspeakers
API UK Ltd,
Amorex Centre,
Bury Road, Lavenham,
Sudbury, Suffolk,
England CO10 9DD
Tel: +441787249856