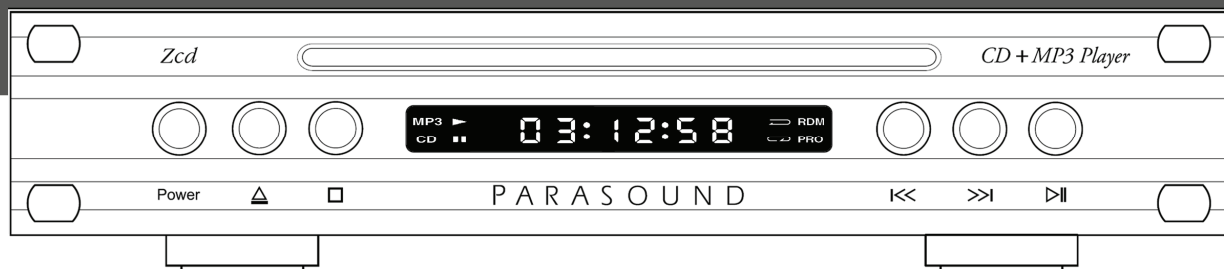


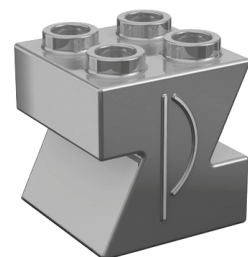
PARASOUND



Zcd

CD Player with MP3 Playback

OWNER'S GUIDE



INTRODUCTION

Thank You for Choosing Parasound

Congratulations on your purchase of this precision component and thank you for your selection of Parasound. We are proud to offer you this versatile audio component, knowing that it will bring you many years of enjoyment and dependability.

Please take a few moments to review this manual so you may enjoy all the benefits of your new Zcd's unique features and capabilities.

Enjoy.

The Parasound Staff
www.parasound.com

Keeping Records for Future Reference

Record the 5 digit serial number located on the bottom side of your Zcd in the space below. Also note your Parasound Dealer's name and telephone number. Your purchase receipt/bill of sale is required to determine if your Zcd is eligible for Parasound warranty service. We recommend that you make an extra copy of your original purchase receipt/bill of sale and store it inside the Zcd's carton.

Please do not throw away the carton or foam packing inserts.

Parasound Zcd Serial # _____

Parasound Dealer: _____

Parasound Dealer Phone Number: _____

Date of Purchase: _____

Important Warranty information

There is no Parasound warranty for this unit if it was not purchased from an Authorized Parasound Dealer. Investigate warranty coverage statements made by *unauthorized* dealers very carefully, as Parasound will not provide service under our warranty and you will need to depend entirely upon the unauthorized dealer for warranty service. A list of Authorized Parasound Dealers and detailed warranty information is available at ***www.parasound.com*** or you can call **(415) 397-7100** between 8:30 am and 4 pm Pacific time.

A missing or altered serial number could indicate that this unit was re-sold by an unauthorized dealer or is stolen merchandise. If this unit is missing its serial number or the serial number has been altered, you should return it to your dealer immediately for a full refund.

Table of Contents

<i>Introduction</i>	2
<i>Placement and Ventilation Guidelines</i>	4
<i>Rear Panel Connections and Controls</i>	5
<i>Audio Output Connections</i>	5
<i>Other Connections on your Zcd</i>	6
<i>Operating your Zcd</i>	8
<i>Remote Control Functions</i>	9
<i>Listening to an MP3 File on your Zcd</i>	11
<i>Frequently Asked Questions</i>	12
<i>If You Require Assistance or Warranty Repair</i>	13
<i>Specifications</i>	14

Unpacking Your Zcd & Placement Guidelines

Unpacking Your Zcd

Carefully remove your Zcd from its shipping carton and locate all the enclosed accessories:

- Remote control and two AAA batteries
- AC power cord
- 3 foot cable for the portable MP3 player input. This cable has a stereo 3.5mm (1/8") mini plug at each end
- Two 12V trigger wires, one with 3.5mm mini plugs, one with a 2.5mm and a 3.5mm mini plug
- USB extension cable for easier use of the rear panel flash drive connection

While you are unpacking your Zcd, inspect it thoroughly for possible shipping damage and tell your Parasound dealer immediately if you find any. If possible, save and store both the inner and outer cartons and—most especially—the foam packing inserts, to protect the Zcd if you have to move it or ship it. You may wish to flatten the cardboard cartons to save room in storage after cutting the taped seams on the bottom flaps. This would be a good time to make a copy of your sales receipt to store with the Zcd's original packing should your unit require warranty service.

Placement Guidelines

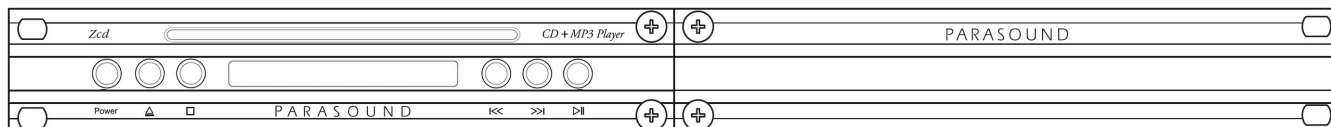
Install your Zcd away from heat sources such as heating ducts, radiators, or other heat-producing components. Always position the Zcd horizontally. Observe the following ventilation guidelines when installing the Zcd in an equipment rack or any other enclosed space:

You should never install the Zcd in an unventilated equipment cabinet or compartment because hot air will not exhaust adequately to prevent overheating. Air often won't circulate adequately in a cabinet or enclosure whose front and back sides are open; pockets of intense heat can still develop around any heat-producing equipment. Allow a few inches of empty space on each side and above the unit and try to avoid crowding or stacking the Zcd tightly between other components.

If you're installing the Zcd yourself, use input and output cables that are long enough to leave at least two feet of slack; that will enable you to pull the Zcd out of a cabinet to check or to change connections without inadvertently disconnecting cables. If you're putting the Zcd in a cabinet, it needs a space that's at least 11 inches wide so you'll be able to turn it around for access to its rear panel connections.

Rack Mounting Your Parasound Zcd

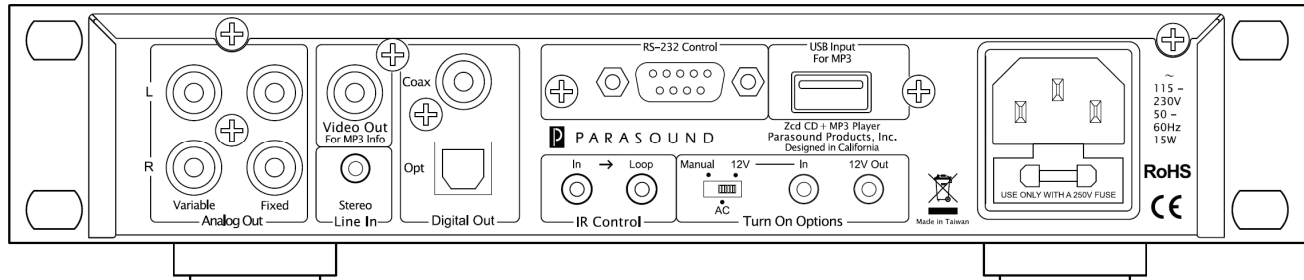
The Zcd occupies only half the width of a single rack space in a standard 19" equipment rack. For rack mounting, you can fasten it to another Parasound Zcustom model by using the Parasound SBS (Side-by-Side) mounting kit (sold separately). You can also mount a single Zcd in the rack with the accessory Zblank panel extender. The SBS includes four rack mount bolts plus four pairs of plastic "shoulder washers." The washers are important because they insulate the Zcd front panel (and chassis) from the metal equipment rack and from the four mounting bolts. Locate these washers on both sides of the front panel before the mounting bolts are screwed into the rack rail.



Note: Tighten each bolt just enough to keep the unit secure in the rack to avoid deforming the shoulder washers. Eliminating metal-to-metal contact reduces the likelihood of creating a ground loop that might introduce hum into your system.

Rear Panel Connections and Controls

Always disconnect the AC cords to your Zcd and power amplifier(s) before making or changing any input, output or trigger wire connections. Inserting or removing an input or output cable while the Zcd or power amplifiers are turned on can result in a blast of sound that can damage your loudspeakers. Make sure there is no strain or tension on any cables that could cause them to pull loose. The Zcd has many different types of audio and control connections, some of which you may not be familiar with. Please read this section thoroughly before making any connections.



Audio Output Connections

There are 2 pairs of analog outputs, Variable and Fixed, and 2 digital outputs, coaxial and optical. The connections you use will depend on your particular system and how you plan to use the Zcd. Sound quality will vary depending on the type of connection you use. Use the highest quality connection that your particular playback system supports.

Analog Out Jacks – Variable [Good Quality]

The Analog Out Variable jacks carry the analog audio signal at an output level which can be controlled by the Zcd's remote control. Because you can control the level of these outputs, you can connect them directly to your power amplifier without any preamp. Use the volume up and down buttons on the Zcd remote to control the sound level. The variable outputs should only be used if you do not have a preamp or other means of controlling the volume. Using the variable outputs in conjunction with a preamp will decrease sound quality since there will be two volume controls in the signal path.

Analog Out Jacks – Fixed [Better Quality]

The Analog Out Fixed jacks carry the analog audio signal at a fixed level that is comparable to the fixed level analog output on any typical CD player. These are the preferred jacks for connection to a preamplifier or whole house audio system because the output is not affected by the volume control buttons on the Zcd remote and is also higher quality than the variable output.

Digital Out Connectors [Best Quality]

The Zcd is equipped with both a Coax (coaxial) and Opt (optical) output connections. These outputs carry a standard S/PDIF digital signal allowing you to use a separate DAC or a home theater receiver to convert the digital signal into analog. They are compatible with any unit with an optical "toslink" input or a "coax" input. If you use the coax output you should use a 75 ohm interconnect that is specifically made for digital signals; a standard video cable is also compatible. There is no difference in sound quality between the optical and coaxial outputs.

The volume buttons on the remote do not affect the digital outputs.

Other Connections

Video Out Jack for MP3 Info

This output is for the sole purpose of viewing MP3 file information such as the track title or number. You can connect the Video Out jack to the composite video input of any standard TV. This video output is at 480i resolution and NTSC only. Use the MP3 cursor and Enter buttons on the remote to navigate folders and MP3 files saved on a CD-R or USB flash drive. Please note that only the first 8-10 characters of the MP3 name will be displayed on the TV.

USB Input for MP3

This input is for a USB flash drive which contains MP3 music files copied from your PC or Mac. *This jack is not for connecting directly to the USB jack on a PC or Mac.*

As soon as you connect a flash drive to the USB input the Zcd will start playing the first MP3 file. If you have a TV connected to your Zcd via the Video Out jack you will be able to view the MP3 menu to select a specific song. Without a TV you can use the Zcd track Skip buttons to select the next or the previous song. If you press the Random button on the remote, the MP3 files will be played in a random order. Included with your Zcd is a USB extension cord to make installing and removing a flash drive easier.

Note: The Zcd will not stream music directly from your PC or Mac.

Line In Stereo jack

This is a stereo 3.5mm input jack. You can connect any *variable* line-level audio source to this jack using the included 3.5mm stereo cable. Variable means the source has its own volume control. *The Zcd will output the source connected to this jack when the Zcd is powered off.* In a basic system where your Zcd is connected directly to your power amp, without a preamp, this jack enables you to connect a second analog source such as a portable MP3 player or smart phone. The volume up and down buttons for the Zcd will not affect the volume level of the device plugged into this jack. *Please note that the device connected to this jack must have its own built-in volume control* (any portable MP3 player or smart-phone will have a volume control).

Note: If you connect a device that does not have its own volume control the sound will be very loud and could damage your speakers and your relationship with your neighbors!

IR Control

In Jack: Your Zcd is compatible with most infrared repeater systems for remote control operation from another room or when the Zcd is installed in a cabinet where its remote handset signals cannot reach its front panel remote control sensor. The IR control Input connector is a standard mono 1/8" (3.5 mm) "mini" jack. The center conductor (plug tip) is for "+" and the outer conductor (plug sleeve) is for "-". Your Authorized Parasound dealer or custom installer can recommend a compatible IR repeater system.

Loop Jack: A Loop out jack is provided as a convenience so you may pass along or "daisy-chain" the incoming IR repeater signal to another remote-controlled component.

Turn On Options Switch

For your convenience, there are three ways the Zcd can be turned on and off.

Manual: When the Turn On Options switch is set to Manual you may use its front panel Power button or the remote control's On and Off buttons.

AC: When the Turn On Options switch is set to AC the Zcd will never turn off even if you press its Power button or press the remote's On and Off buttons.

12V: When the Turn On Options switch is set to the 12V position the Zcd is turned on and off with an external +9 V to + 12 V DC voltage from your preamp or system controller. When the external voltage ceases the Zcd will turn off immediately.

Note: When the Turn On Options switch is set to 12V or AC the front panel Power button and remote control On and Off buttons are disabled.

12V In Jack

The Zcd 12V input uses a mono 3.5mm mini jack. To trigger the Zcd On and off, insert the trigger wire plug into this jack and plug the other end into your preamp or system controller's 12V output jack. When the Turn On Options switch is set to 12V the Zcd will turn on and off automatically when your preamp or system controller is turned on or off. The Zcd trigger circuit draws a negligible 15 mA.

Note: If the controller's trigger output is a + and - terminal, you can cut the plug off one end of the included trigger wire and attach the bare wires to these terminals. If the trigger voltage source is DC, the trigger plug tip must be + (positive) and its sleeve – (negative). The wire with the stripe on it corresponds to the plug's tip and the unmarked wire corresponds to the sleeve of the plug.

12V Out Jack

The 12V Out Jack will supply 12 volts whenever the Zcd is turned on. You can use this output to trigger a power amplifier such as the Parasound Zamp v.3 to turn on automatically. This is particularly useful if you are not using a preamp and the Zcd is connected directly to a power amp. This output can supply up to 40ma, far more than needed to trigger a Parasound power amplifier on and off.

RS-232 Control Jack

This DB9 serial port permits the Zcd to be controlled by home automation and control systems such as Crestron®, AMX®, Control4®, Niles® and Elan®. When the Zcd is connected to such a device, it can be controlled from keypads or touch-screen panels throughout your house. The capabilities of such connections, and the programming and interfacing needed will depend on the automation system you select. Consult your Parasound dealer or custom installer for more information regarding interfacing an external control system to your Zcd. The complete Zcd RS-232 protocol can be found at: www.parasound.com.

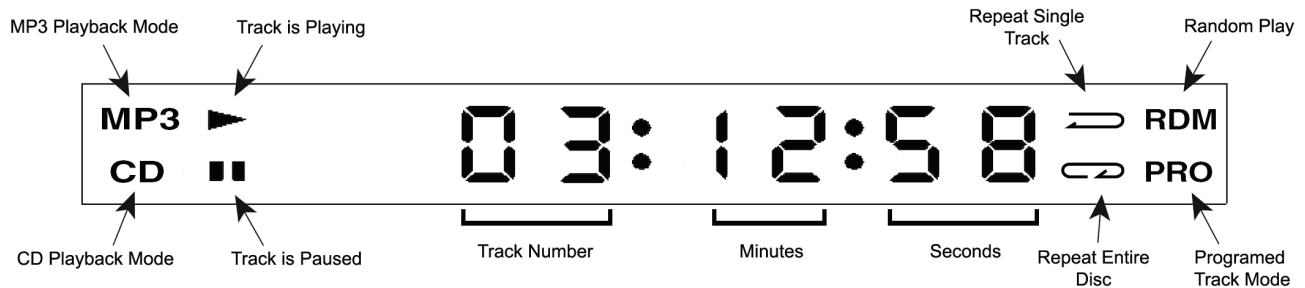
AC Line Cord

Connect the AC cord only after you have connected all of the other wires. The power cord supplied with your Zcd is an IEC standard AC cord. If possible, plug your Zcd into the same AC outlet that your accompanying audio components (particularly your preamp and power amplifiers) are plugged into. If different AC outlets are used the ground potential may be higher or lower between the AC outlets, resulting in audible hum in the system.

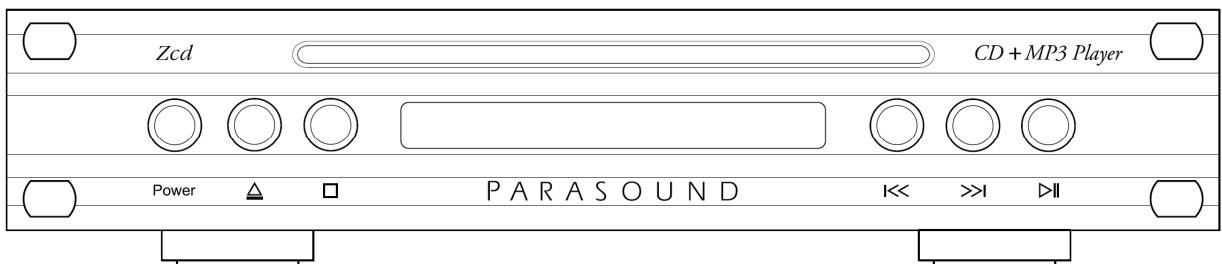
Operating your Zcd

Front Panel Display:

The front panel display shows track number, track time and playback settings:



Front Panel Controls:



Power Button

Pressing the Power button will turn the Zcd On and Off.

Note: The front panel Power button and remote control On and Off buttons are disabled when the rear panel Turn On Options switch is set to 12V or AC.

▲ (Eject/Feed) Button

Press this button to eject a CD that is inside the player. If a CD is partly inserted into the slot pressing this button will also bring the disc in.

■ (Stop) Button

If a disc is playing, pressing Stop will stop playback.

|<< and >>| (Track Skip) Buttons

Pressing these buttons will cause the Zcd to skip to the next track or to the previous track for both CD and MP3 playback. If you press and hold these buttons it will fast forward or rewind.

▶|| (Play/Pause) Button

This button has a dual function. If the CD is stopped, it will start playing when pressed. If the CD is already playing then pressing this button will pause playback.

Remote Control Functions

The Zcd remote control has a maximum range of approximately 20 - 25 feet (6 - 7.5 meters) while pointed at the unit. Use only AAA alkaline batteries in the handset and insert them according to the + and - polarity markings in the battery compartment.

On and Off Buttons

These have the same function as the Power button on the front panel. These separate buttons enable programming unambiguous “hard” off and on commands into a system controller or to create a macro sequence for a learning-type remote control.

Note: The On and Off buttons are disabled when the rear panel Turn On Options switch is set to 12V or AC.

CD Volume + and - Buttons

The CD Volume + and - buttons control the volume level of the variable analog output. *The fixed output jacks and the two digital outputs are not affected by these volume buttons.* The volume buttons would normally only be used if your Zcd is connected directly to a power amp without a preamp.

Next and Prev Track Buttons

These buttons will skip to the next track or to the previous track for both CD and MP3 playback.

<< (Fast Forward) and >> (Rewind) Buttons

Each time you press Fast Forward or Rewind buttons on the remote the playing speed will increase. Available speeds are 2X, 4X, 8X and 16X. To return to normal playback speed, press the Play button. Normal playback will also resume at the end or beginning of each track.

PROG (Program) Button

This is used to program a particular track order. For example you might want to listen to track 9, 5, 3 then 11. See the section on how to program track order on page 10.

Number Buttons

The number buttons allow you to jump directly to a particular track. If you want to jump to a track higher than 9, press the 10+ button first and then the next digit. (For example, number 14 is 10+, then 4)

Transport Buttons (Play, Stop Pause)

These transport keys control both CD and MP3 playback.

MP3 Cursor and Enter Buttons

These buttons are only for use if you have a TV connected to your Zcd. With a TV connected you will be able to view and navigate through MP3 files stored on a USB flash drive or CD-R.

Random Button

The Random button allows the tracks of a CD (or MP3 files) to be played back in a random order. Press this button once to turn on Random mode and a second time to turn it off. When Random mode is selected, “RDM” will be displayed in the bottom right corner of the display.



Repeat Button

The repeat function has three modes:

Normal – CD or MP3 songs will play until the last track is finished and then the disc will stop.

Repeat Track – The current CD track or MP3 file will continue to play over and over.

Repeat All – All CD tracks or MP3 files will play until the last track is finished and then start playing from the first track again.

Review Button

This is used with the track programming function. After you have programmed a sequence of tracks, pressing the Review button allows you to step through each track that you have programmed.

Clear Button

This is used in conjunction with the Review button. While you are reviewing the programmed tracks you can delete a particular track by pressing the Clear button.

Zpre2 Buttons

These buttons are used to control the Parasound Zpre2 preamplifier.

Ztuner v.2 Buttons

These buttons are used to control the Parasound Ztuner v.2 FM/AM Tuner.

Programming Track Order

The track programming feature allows you to select a particular order for track playback. For example you might want to listen to only tracks 9, 5, 3 and 11, in that order. This is possible by following this programming procedure:

- 1) Press and hold the “PROG” button until “P00” is displayed then release button (about 3 seconds).
- 2) Using the number pad, press the desired track number you wish to memorize.
(Only press one number because only one track is memorized at a time)
- 3) Briefly press and release the “PROG” button to memorize (save) your track selection.
- 4) **Repeat steps 1-3 to memorize (save) a 2nd or 3rd track and so on.**

Playing your programmed track order

To play the memorized track order, briefly press and release the “PROG” button. The memorized track order will begin to play. “PRO” will be displayed indicating you are in program playback mode. To cancel program mode briefly press the “PROG” button once. When the Zcd is turned off the programmed track order will be deleted. When the disc is ejected the programmed track order is deleted.

Playing MP3 Files

The Zcd can playback MP3 files stored on a USB flash drive or CD-R.

Playing MP3 Files from a USB Flash Drive

To play MP3 files from a USB flash drive, simply plug the flash drive into the USB connection on the back of the Zcd. It will immediately start playing the first file. The front panel display will show "MP3" in the top left corner during MP3 playback. All of the Zcd transport buttons now control the USB flash drive playback. *If there is a CD in the Zcd, it will not be able to be played until the USB flash drive is removed or until you eject the CD and re-insert it.* If you press the Random button on the remote all of the tracks on the USB flash drive will be played in a random order. If your Zcd is connected to a TV you will be able to view your files and folders and navigate through them using the cursor and MP3 Enter buttons on the remote. Included with your Zcd is a USB extension cord to make installing and removing a flash drive easier.

Playing MP3 Files from a CD-R

To play MP3s from a CD-R, first eject any CD that might be inside the Zcd. Insert the CD-R and the first track will start to play. The front panel display will show "MP3" in the top left corner. All of the transport buttons now control the MP3 playback. If you press the Random button on the remote all of the tracks on the CD-R will be played in a random order. If your Zcd is connected to a TV you will be able to navigate through your files and folders using the cursor buttons on the remote.

Using the Video Output to navigate MP3 Files

If you connect a TV to the Video Out on the Zcd you can navigate the MP3 files on a connected USB flash drive or inserted CD-R. *This video output is at 480i resolution and NTSC only.* Use the MP3 cursor and Enter buttons on the remote to navigate folders and MP3 files. Please note that only the first 8-10 characters of the MP3 name will be displayed on the TV.

Frequently Asked Questions

Why is there no sound from the speakers?

- If you are using the variable outputs make sure the volume is turned up
- Check that input and output cables are secure at both ends.
- Check that your preamp or receiver is set for the input to which the Zcd is connected.

Why do the volume buttons not work?

- The volume buttons on the remote only control the Variable Analog Out.
- The Digital Output and Fixed Analog Output are not affected by the volume buttons.

Why won't the Zcd turn on or off from the front panel or remote?

- Check the setting of the Turn On Options switch. When set to 12V or AC the front panel Power button and the remote control's On and Off buttons are disabled.

What is the rear panel 3.5mm Stereo Input jack used for?

- This is used if you do not have a separate preamplifier and your Zcd is hooked directly to your power amp. The rear panel input allows you to easily hook up a second audio source such as a portable MP3 player. Please note that whatever is hooked up to this input must have its own volume control since the Volume + and - buttons on the Zcd remote will not affect this input.

How do I select the rear panel 3.5mm Stereo Input?

- When the Zcd is turned off the rear panel input will be automatically selected.

What can I connect to the USB input on the rear panel?

- The USB connection is only used for connecting a USB flash drive that contains MP3 files.

What could cause the remote to not work?

- Weak or dead batteries. Replace; information about battery recycling: www.Earth911.org.
- Insure that the front panel IR receiver is not obscured or exposed to direct sunlight or to an LCD or a plasma TV screen.
- IR signals might be being received by both the rear panel input and the front panel sensor. Insure that the IR signals are only reaching one of the two.

I can hear a background hum from the speakers.

- Move audio cables and AC cords away from each other (while power is off).
- Try to route audio cables and AC cords perpendicular to each other (while power is off).
- Make sure insulating shoulder washers are used if unit is rack mounted.
- Reversing the direction of the other components' AC plugs, one-by-one (while power is off)..
- Insure that the power amps and the Zcd are plugged into the same AC outlet.
- The turntable ground wire must be attached to the GND terminal.

Maintaining Your Zcd

Your Zcd requires no periodic maintenance and has no user serviceable parts inside. To avoid risk of electric shock do not remove the top cover. To keep it clean use only a soft cloth moistened with a few drops of clear water or Windex. Never use any solvents or abrasives. The remote control handset batteries should be removed whenever it will be unused for an extended period. Remove the battery cover annually to inspect and remove leaking batteries.

Are You Having Difficulty?

Warranty Repair

Call your Parasound dealer first. If the dealer can't help you with your problem we encourage you to call Parasound's Technical Service Department, toll-free at **1-415 397-7100**, Monday - Friday, 8am - 4pm Pacific time. We can suggest other diagnostic tests you can easily perform. If we determine that your Zcd should be returned to Parasound or an Authorized Parasound Warranty Center for inspection and possible servicing, we will provide the location of a warranty center near you or shipping instructions for the unit's return to Parasound.

Read your accompanying Parasound Limited Warranty carefully to understand the applicable rights and limitations. This section provides instructions for obtaining repairs, both for units covered under the Parasound Limited Warranty and for units or situations which are outside the Warranty.

Unit is not eligible for repair under the terms of the Parasound warranty if:

1. Unit was not purchased from a Parasound Authorized Dealer.
2. You do not have the original bill of sale or sales receipt from a Parasound Authorized Dealer.
3. You are not the original owner. The Parasound warranty is not transferable.
4. Unit's serial number was removed, modified, or defaced.
5. Unit shows evidence of abuse and/or misuse.
6. Unit was modified in any way.
7. A prior repair was attempted by an unauthorized repair station.

Before You Return Any Unit to Parasound for Service

Before you send your unit to Parasound, you will need to obtain a specific Return Authorization (RA) number and shipping instructions from Parasound's Technical Department. The RA number must be clearly marked on the outer carton. Use the original factory packing materials and arrange adequate insurance to cover its value. You must include a copy of your purchase receipt, since this document establishes the validity of this unit's warranty. Warranty repairs are only performed by Parasound or Parasound Authorized warranty centers when your purchase receipt is from a Parasound Authorized Dealer or Parasound Authorized Reseller.

Specifications

Frequency Response: 20 Hz - 20 kHz, +/-1 dB

THD Distortion: < 0.02% at 20 Hz

S/N Ratio: > 98 dB, IHF A-weighted

Crosstalk: >75 dB at 20 kHz

Maximum Output Level: 2.0 Volts

Output Impedance: < 60 Ω

AC Power Requirement:

115 Volts, 60 Hz or 230 Volts, 50 Hz
(Internal wiring change required to set for 115 or 230)
15 watts

Dimensions:

Width: 9.5"
Depth: 10"
Height, with feet: 2"
Height, without feet: 1.75"

Weight:

Net: 4.5 lbs.
Shipping: 8 lbs.

Rack Mount Accessory:

SBS – Side by Side Mounting bracket (May be purchased separately)
Zblank panel extender (May be purchased separately)

Specifications and features subject to change
or improvement without notice.

Crestron, AMX, Control4, Niles and Elan are registered trademarks of their respective trademark
owners.

Copyright Parasound Products, Inc. 2011
Rev. 1.0

We invite you to visit www.parasound.com for the most up-to-date information on your unit and to find out about other Parasound products. Learn why Parasound has been a quality and value favorite of magazine reviewers, sound professionals and listeners like you since we were founded in 1981.



PARASOUND
NEW CLASSIC



PARASOUND®

Parasound Products, Inc. 2250 McKinnon Ave, San Francisco, CA 94124
Customer Service: 415-397-7100
www.parasound.com